



.. 2560

.....

2560

.. 2560


19 2559

.. 2548 5 26  
( ) ..

"

2560

20 .. 2559

  
( )

$$\frac{3}{3} \cdot .2548$$

2560

\_\_\_\_\_

1

-

\_\_\_\_\_

    /           /           ( . )  
/    /           ( . )

5-6  
1-37

\*\*\*\*\*

1

..2548

( )

( )

( ) ..

"

"

(. 2560 - 2562)

. 2560

)

29

. 2560

40,805,460.-

(

..2559

..2560

1. /

2.

3. /

4.

5.

6.

1.

2.

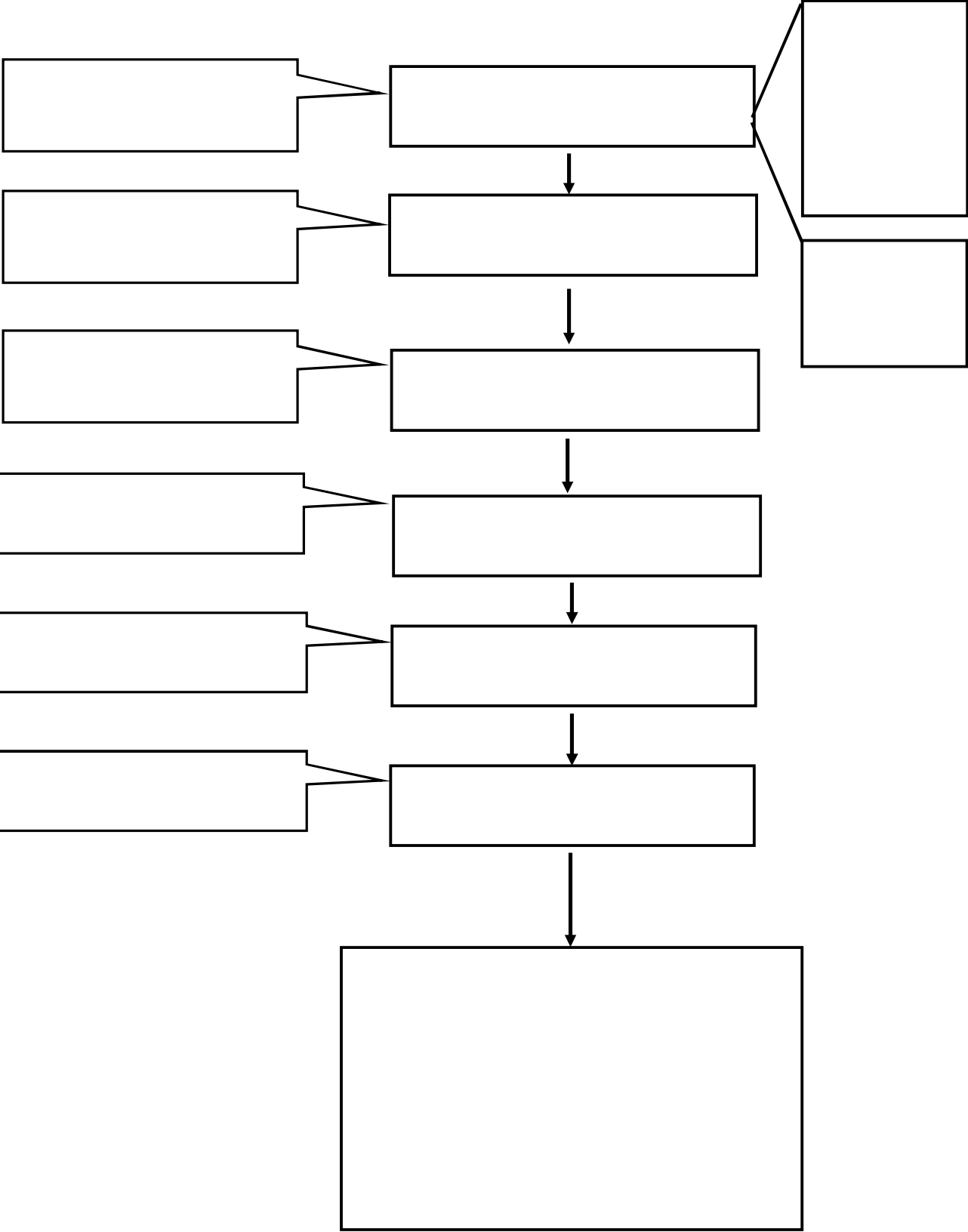
1. /

2. /

3.

4.

=====





. .2559

/					
1	6 1 1 5 <b>13</b>	882 147 147 735 <b>19.11</b>	2430200.- 3000.- 30000.- 175000.- <b>2638200</b>	1320 001 0.16 095 <b>14.32</b>	
2	11 1 <b>12</b>	16.17 147 <b>17.64</b>	2383220.- 450000.- <b>2833220.-</b>	1295 245 <b>15.40</b>	
3	2 1 4 <b>6</b>	294 147 441 <b>882</b>	35000.- 30000.- 240000.- <b>305000.-</b>	0.19 0.16 130 <b>1.65</b>	
4	3 2 <b>5</b>	441 294 <b>735</b>	3927000.- 100000.- <b>4027000.-</b>	2134 054 <b>21.88</b>	



5	1	1.47	5,000.-	0.03	
	5	7.35	7,949,600.-	43.19	
	1	1.47	80,000.-	0.43	
	1	1.47	10,000.-	0.05	
	8	11.76	8,044,600	43.67	-
6	-	-	-	-	
7	-	-	-	-	
	4	5.88	70,000.-	0.38	
	1	1.47	25,000.-	0.13	
8	5	7.35	95,000.-	0.51	
	3	4.41	55,000.-	0.29	
	1	1.47	20,000.-	0.11	
9	4	5.88	75,000.-	0.40	
	2	2.94	21,500.-	0.12	
	6	8.82	57,100.-	0.31	
	3	4.41	158,000.-	0.86	
	4	5.88	72,300.-	0.39	
	15	22.05	383,900	1.68	
	68	100	18,401,920	100	





